

A BRIEF HISTORY OF TEMPLE BETH EL

Over eighty years ago Temple Beth El was a little room and a big dream. On June 4, 1929, many of the young adults of Allentown's four hundred Jewish families established a new temple dedicated to the principles of the Conservative movement which was called Temple Beth El.

Temple Beth El dedicated their home at 17th and Hamilton Streets on June 1, 1952. That location served us well for many years with active programming, service and leadership. In the late 1980's a long range planning committee was created in order to project our congregation's needs for the next fifty years. Some of the challenges we faced were potential renovations, parking needs, and the changing demographics of our congregation. In 2002, our neighbor, St. Luke's Hospital, expressed a need to purchase our site for their own expansion plans. With this piece of the financial puzzle filled, we were able to move ahead with our plans.

In January 2006, we realized our vision as the congregation moved into its present home on Springhouse Road in South Whitehall Township. The new Temple building incorporates the beautiful stained glass from our previous building, as well as many other features and meets the needs of our growing, active congregation.

As an affiliate of the United Synagogue of Conservative Judaism, we maintain the rich heritage and tradition of Judaism interpreted in the light of modern times.

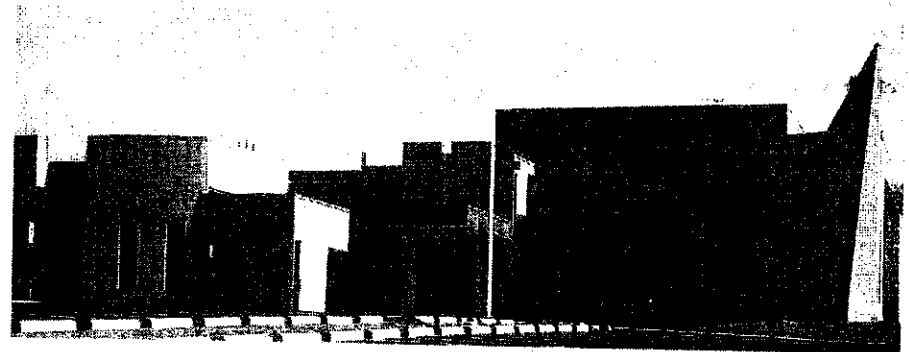
MEET OUR RABBI

Rabbi Moshe Re'em is a native of Buffalo, NY. He holds B.A. degrees from Columbia University and the Jewish Theological Seminary, and a Ph. D. in education from the University of Wisconsin. Ordained at the Jewish Theological Seminary, Rabbi Re'em has served Conservative congregations in Israel and Wisconsin and taught at the University of Wisconsin-Madison and Bar Ilan University. Rabbi Re'em has served as rabbi of Temple Beth El since 2002.

MEET OUR CANTOR- EDUCATOR

Cantor Kevin D. Wartell joined our temple family in 1988. Cantor Wartell graduated from the University of Michigan with a B.A. degree in Judaic Studies and a degree in Sacred Music from the Hebrew Union College. He has also completed advanced studies in Jewish Education at the Hebrew Union School of Education. Cantor Wartell supervises the Religious School program.

Welcome
and
Shabbat Shalom!



Temple Beth El
Allentown, Pennsylvania

1305 Springhouse Road, Allentown, PA 18104

Tel: 610-435-3521 Fax: 610-435-7704

Email: rabbi@bethelallentown.org

cantor@bethelallentown.org or

celia@bethelallentown.org

Shabbat Shalom

We are glad that you are with us as we worship together. Temple Beth El is a Conservative synagogue, and much of the service is conducted in Hebrew. Conservative Judaism attempts to synchronize ancient Jewish traditions with the realities of our world.

To acquaint friends and family with the service, we offer the following material.

- ❖ *Please do not enter or leave the Sanctuary when the Ark is open, the congregation is standing for the Kedusha (p. 116 and 167), or the Rabbi is speaking.*
- ❖ *Please stand while the Ark is open.*
- ❖ *Only mourners and those observing Yahrzeit should stand during the Mourner's Kaddish.*
- ❖ *All males must wear a kippah (skullcap or head covering) as a sign of respect. Jewish males wear a tallit when called to the Bimah for an Aliyah.*
- ❖ *Temple Beth El is a smoke-free zone. Smoking is prohibited on all synagogue premises.*
- ❖ *No photography may be taken or cell phones used inside the building on Shabbat. Please make sure that your cell phones are turned off while in the sanctuary.*

The Service

The Shabbat service is divided into three sections. First, the **Preliminary Service** includes portions of the Book of Psalms. Second, the **Shacharit** includes the Torah service. Third, the **Musaf** has additional prayers recalling services held in the ancient Holy Temple in Jerusalem. The Mourner's Kaddish (memorial prayer) is recited in memory of those who have died. At the conclusion of the service, we recite Kiddush (the blessing over the wine) and Hamotzi (the blessing over the bread) before partaking of our festive Kiddush.

At the beginning of the Torah service, the Torah is removed from the **Aron Kodesh** (Holy Ark). It is carried in procession around the Sanctuary for all to see and touch. During the Torah service, Jewish adults receive Aliyot (being "called to the Bimah" to recite Torah blessings). Reading from the Torah requires great skill and preparation. Other honors throughout the service include opening or closing the Aron Kodesh and carrying, lifting, or dressing the Torah. At the conclusion of the service, the Torah is carried in procession around the Sanctuary and returned to the Ark.

Glossary of terms describing the Synagogue and the Service.

Torah Scrolls The Five Books of Moses, housed in the Aron Kodesh; written on special parchment by trained scribes.

Aron Kodesh The Holy Ark; houses the Torah scrolls. Torah is composed of the first five books of the Hebrew Bible and is read entirely over the calendar year.

Ner Tamid Eternal Light, the lamp hanging in front of the Holy Ark, which burns continually as a reminder of the light that burned in the Holy Temple in Jerusalem.

Humash The Books of Moses and selected readings from the Prophets; the larger red book containing Hebrew and English translations, used during the Torah service.

Siddur Prayer Book used during most of the service. As Hebrew is read from right to left, the book binding is on the right.

Aliyah "Going up"; honor of being called to the Bimah to recite Torah blessings.

Tallit Prayer shawl traditionally worn by Jewish men but also worn by women. The wearing of Tzitzit, knotted fringes at the four corners, is religiously mandated and acts as a reminder of the 613 commandments in the Torah.

Kippah Skullcap or yarmulke, mandatory for males and optional for women, is worn as a sign of reverence for G-d.

Ten Commandments Represented by the Hebrew letters on the two marble tablets hanging above the Ark.

Menorah A seven-branched candelabrum, reminiscent of those used in the Holy Temple in Jerusalem.

Stained Glass Windows beautifully depict the twelve tribes of Israel.